

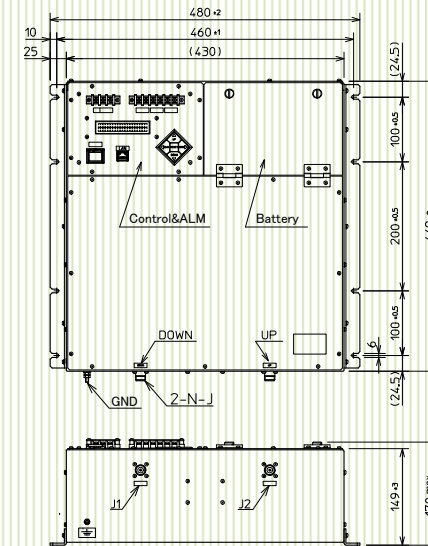
# Coaxial Relay Amplifier

2-band independently use, operable in power failure

## Specifications

<b>Frequency</b>	<b>260MHz/360MHz Band</b>
<b>Gain</b>	<b>0~30 dB</b>
<b>Minimum sensitivity</b>	<b>43dBμV/open</b>
<b>V S W R</b>	<b>≦ 1.5</b>
<b>Impedance</b>	<b>50Ω (nominal)</b>
<b>Reserve power</b>	<b>Built-in Battery</b>
<b>Power Source</b>	<b>AC100V (50/60Hz)</b>
<b>Connector</b>	<b>N-J</b>
<b>Temperature range</b>	<b>-10℃~+50℃</b>
<b>Weight</b>	<b>≦18kg (w/o mounting bracket)</b>

Outline View



Block Diagram

