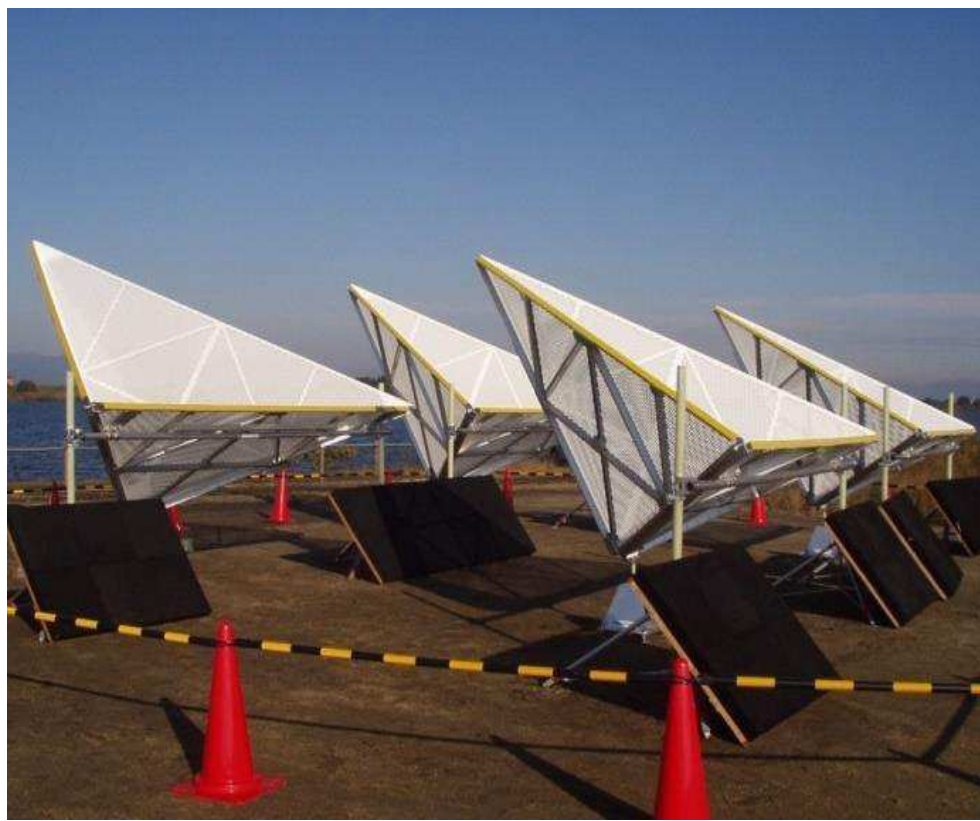


Trihedral Corner Reflectors for SAR Calibration

The trihedral corner reflector provides the specified radar cross section (RCS) for the Synthetic Aperture Radar (SAR) of ALOS-2 to maintain the precise land coverage observation. It was used by JAXA for ALOS-2 calibration.

Trihedral Corner Reflector (Portable Type)



Trihedral Corner Reflector mounted on Mt. Fuji

